

SUPERSPORT





Index

Sport, made light	3
Sporting flair	5
The SuperSport family	7
Ride in comfort	9
Versatile sports performance	11
Engineered for emotions	13
Precision-designed	15
Full control at your fingertips	17
Ducati Quick Shift	19
Even sportier	21
Touring Attitude	23
Safety as standard	27
Endless excitement	29
Always by your side	31
More value to your passion	33
Technical data and gear	35
Accessories	45
Apparel	61

Sport, made light



Eye-catching, fun and versatile, the SuperSport is a lean road machine that, wherever it is ridden, channels the energy and excitement of sport riding. From weekend roads to everyday roads, from city streets to twisting country highways. With a comfortable riding position, a dry weight of just 184 kg and the impressive performance of the Testastretta 11° engine, every ride becomes an opportunity to indulge your sporting instinct. Wherever, whenever, the SuperSport makes every motorcyclist a real rider: whichever road you take, get ready to experience it as never before.



Sporting flair

The SuperSport has a dynamic, compact and lightweight profile. Its smart design incorporates classic Ducati sports elements, such as the single-sided swingarm, the sculpted tank, and side silencer, which leaves the rear wheel Y-spokes in view. The tapered, tautly designed tail offers the perfect blend of passenger comfort

and sports flair, enhanced even further by the colour-coordinated seat cover that matches and continues the side panel styling. The striking front-on view is characterised by the LED Daytime Running Light (DRL*), , assertively announcing the SuperSport's road presence.

* Please check product availability with your Dealer





The SuperSport Family

SuperSport is a family of sport road bikes that share the same distinctive performance and versatility. Available in Ducati Red with outstanding standard equipment, the SuperSport interprets the concept with purity and style. The SuperSport S is designed for those who desire the ultimate in sportiness with specific technical equipment. The "S" version is proposed in Ducati Red, as well as in the distinct Star White Silk, with red frame and wheel rims.



Ride in comfort

The ergonomic triangle, specially designed for the SuperSport, provides a comfortable, relaxed riding position - projected slightly forward - that lets riders quickly slip into a sportier position when the pace picks up. A seat height of just 810 mm, and the option of raising or lowering it by fitting an accessory seat, makes the SuperSport accessible to all riders. Passengers will also appreciate the comfortable seat design and the footpegs, positioned at just the right height to prevent leg fatigue. The SuperSport has a riding stance that makes it suitable for urban riding but also a joy on medium-distance journeys, with guaranteed control and effectiveness in sports style riding.





Versatile sports performance

The SuperSport blends comfort with versatility thanks to solutions that make it perfect for everyday road riding - but without ever compromising its sporting spirit. The windscreen (which can be raised by 50 mm to ensure better high-speed airflow protection), side pannier mounts and long-range 16-litre fuel tank give the SuperSport good touring capability. Whichever road you take, the three Riding Modes ensure optimised SuperSport control, while special Sport, Touring and Urban packages mean the bike can be personalised to suit individual tastes and requirements.



Engineered for emotions



The 937 cc Ducati Testastretta 11° offers vigorous power delivery across the rev range and a broad power band: it unleashes 110 hp at 9,000 rpm and a maximum torque of 9.5 kgm at 6,500 rpm, 80% which is already available at 3,000 rpm. Beyond that threshold, the torque curve stays above 90% all the way to 9,000 rpm. A punchy power unit that, thanks to refined electronic control, ensures a reactive easy-to-handle throttle response and maximum riding pleasure.



Precision-designed

The frame of the SuperSport is the latest development of the famous Ducati Trellis design that exploits the engine as a load-bearing element, a configuration that helps achieve a weight in running order of 210 kg. Like a true Ducati sports bike, the SuperSport is equipped with an aluminium single-sided swingarm and fully adjustable suspension, with Marzocchi 43 mm forks at the front and a Sachs monoshock at the rear. The wheels utilize Pirelli Diablo Rosso III tyres, 120/70 ZR 17 at the front and 180/55 ZR 17 at the rear, sizes that combine great handling with an optimised contact patch. The choice of rear tyre, a 1,478 mm wheelbase and a steering geometry with a 24° rake and 91 mm trail give the SuperSport lightness and superlative drop-in performance, maximising stability on corners and at speed. Frame performance is also highlighted by the 48° lean angle, ensuring limitless on-road fun. Completing the outstanding equipment is the responsive, modulated Brembo braking system with monobloc calipers, 320 mm discs and a radial pump in the front, and a 245 mm disc with a 2-piston calliper at the rear.



Full control at your fingertips

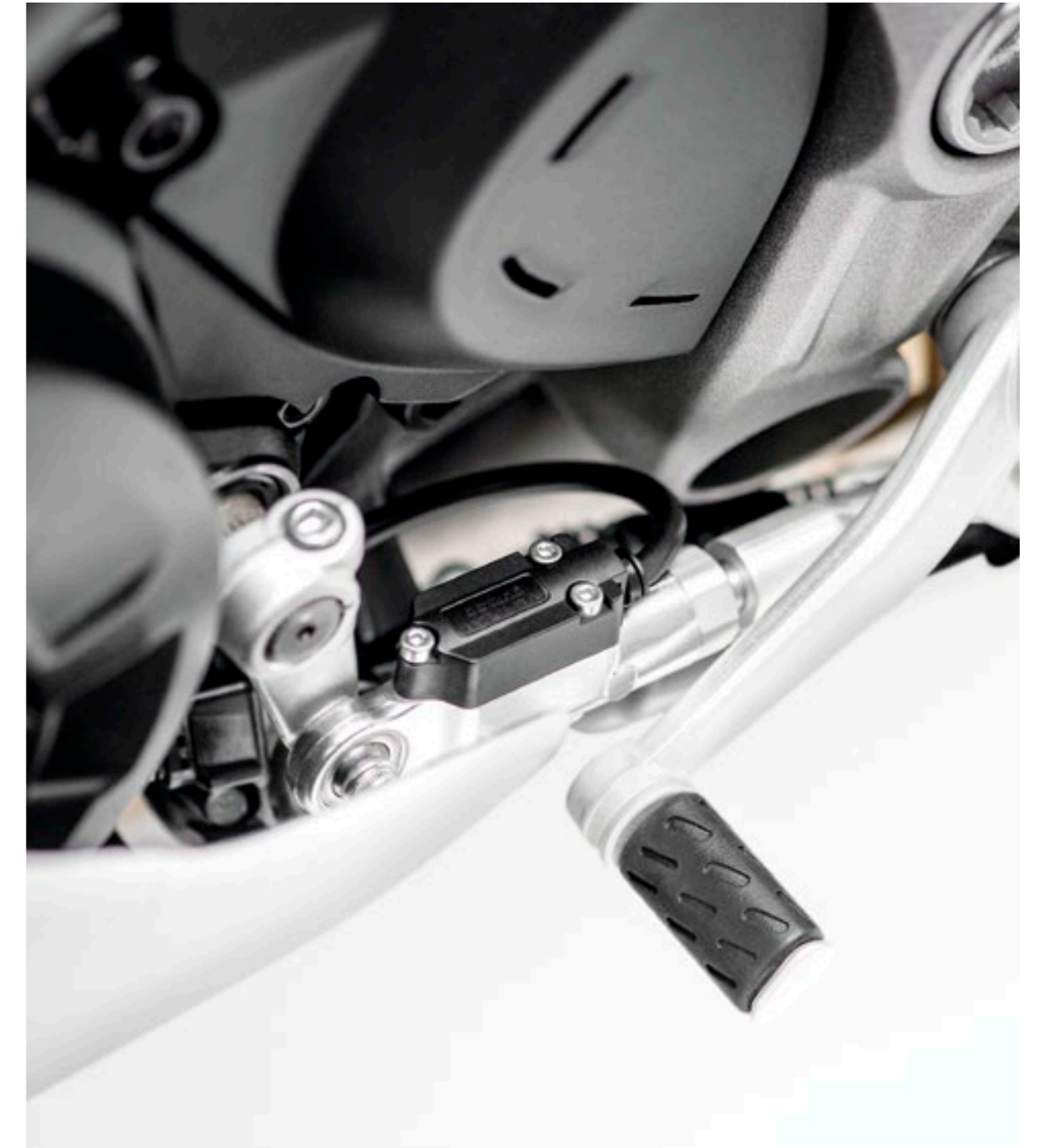
Riders have full control via the smartly designed forged aluminium handlebars, mounted on the top yoke, which leave the fork adjusters in view. An array of cutting edge electronics enhances SuperSport performance, optimises control and boosts active safety. The comprehensive, cutting edge control panel provides three Riding Modes - Sport, Touring and Urban - and lets riders customise them to set and adjust Ride-by-Wire, Ducati Quick Shift (DQS) up/down and the Bosch ABS and Ducati Traction Control parameters, thus adapting the bike to individual riding styles and changing road conditions.





Ducati Quick Shift

Ducati Quick Shift (DQS) with up/down function is a race-derived electronic system that lets riders change up and down gears, without having to use the clutch or close the throttle. Ducati Quick Shift (DQS) up/down ramps up the excitement of sport riding and lends a valuable helping hand in city traffic or on winding roads requiring frequent gear changes.

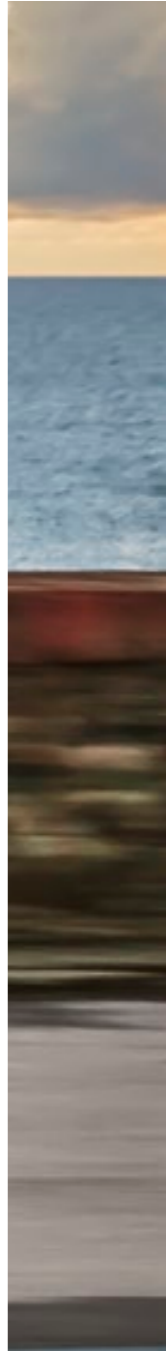
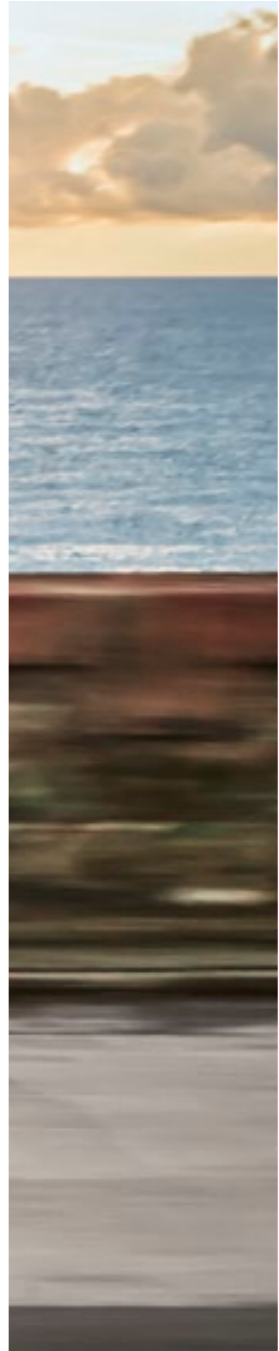
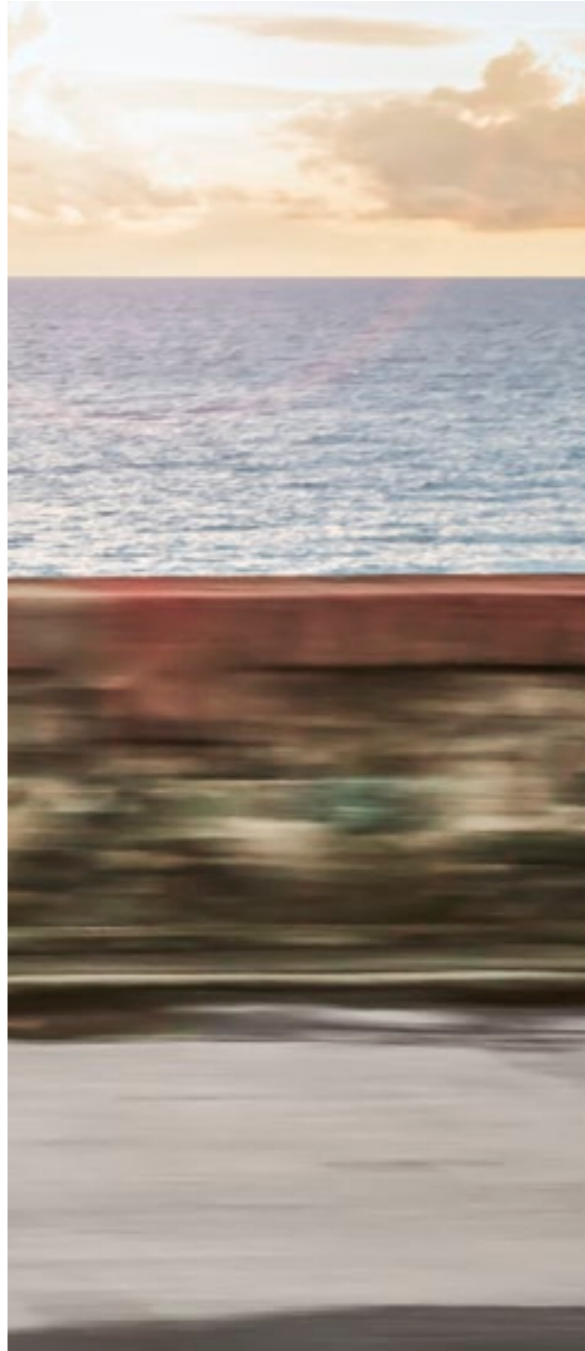




S Equipment Even sportier

Designed for those looking for maximum sport performance, the SuperSport S version is even more feisty. The SuperSport "S" version sees the already-complete SuperSport equipment upgraded to provide a passenger seat cover, 48 mm Öhlins TiN-treated forks and an Öhlins monoshock with integrated gas cartridge, both fully adjustable. Ducati Quick Shift (DQS) up/down also comes as standard.





Touring attitude

The SuperSport combines the sporty side of Ducati bikes with the fun and comfort of riding and mid-range touring, allowing you to turn your day trips into journeys lasting a few days. This is thanks to the comfortable riding position, solid aerodynamic protection and the carrying capacity offered by the new 44-litre side panniers that brings out the touring side of the SuperSport. The new side panniers are large enough to carry a standard helmet and have aerodynamic and sporty lines, a demonstration of the attention to design that characterises every Ducati motorcycle.





Safety as a standard



The continuous work that Ducati carries out in terms of design, research and development serves to ensure cutting edge bikes characterised by maximum active safety levels. A commitment that involves the definition of increasingly advanced technological systems to increase the rider's level of control, such as the Ducati Safety Pack (DSP) which, for the SuperSport, includes Bosch ABS and Ducati Traction Control (DTC). Equipment that optimises the bike's dynamic performance in both braking and acceleration and offers numerous levels of adjustment with three different intervention levels for the Bosch ABS and eight for the Ducati Traction Control (DTC).



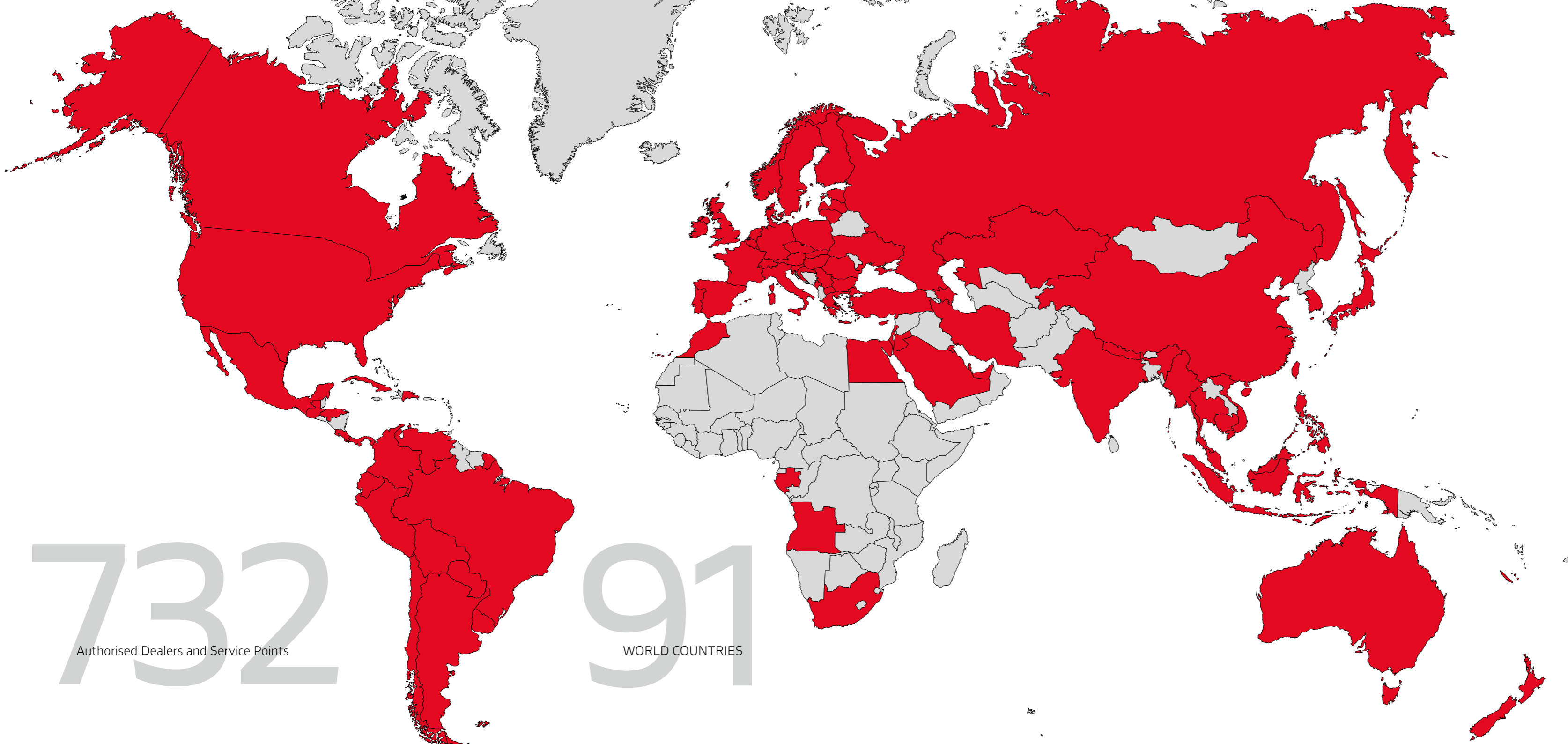
Endless excitement

In designing each bike, Ducati constantly strives to ensure maximum reliability while reducing service costs. A commitment that has seen the intervals for the main Desmo Service, extended to 30,000 km for the SuperSport, in which valve clearance is checked and adjusted if necessary. Even the simplest of checks, such as the Oil Service, are extended to 15,000 km or 12 months. A considerable interval for such exceptional performance engines, which only confirms the high quality standards adopted in terms of material selection and R&D processes. Ducati continuously invests in the technical training of its dealers. The specific skills offered by the official Ducati Service network ensure that all those operations needed to keep every Ducati in perfect condition are thoroughly executed, while advanced equipment such as the Ducati Diagnosis System allows the software on each Ducati to be updated with the latest releases, ensuring that the electronics continue to perform at the maximum level.



* Equal to 18,000 miles





732
Authorised Dealers and Service Points

91
WORLD COUNTRIES

Always by your side



One of Ducati's main goals is to offer every Ducatista the chance to enjoy unlimited and safe travel all over the world. To achieve this aim, Ducati offers a "fast delivery" original spares service, with delivery in 24/48 hours across 85% of its operating areas. With a distribution network that covers more than 90 countries, thanks to 766 official Dealers and Service Points*, choosing a Ducati means you can travel worry free and in total freedom, wherever the road may take you, and count on support from our extensive Dealer network that ensures Ducati quality and professionalism is always close at hand.

*Information updated as of October 2017

More value to your passion

Ever Red

Extended Warranty

With Ever Red, the quality and reliability of the Ducati brand remain your inseparable travelling companions over time. Ever Red is the exclusive Ducati warranty extension programme. With its activation you can continue to be protected for 12 or 24 months beyond the expiration of the Ducati Warranty (24 months). Ever Red includes roadside assistance for the entire coverage period and no mileage limits. In this way you can ride as far as you desire, even abroad, enjoying your Ducati worry free.

To find out if the Ever Red extension is available in your country and for further information contact your Ducati dealer or visit ducati.com.

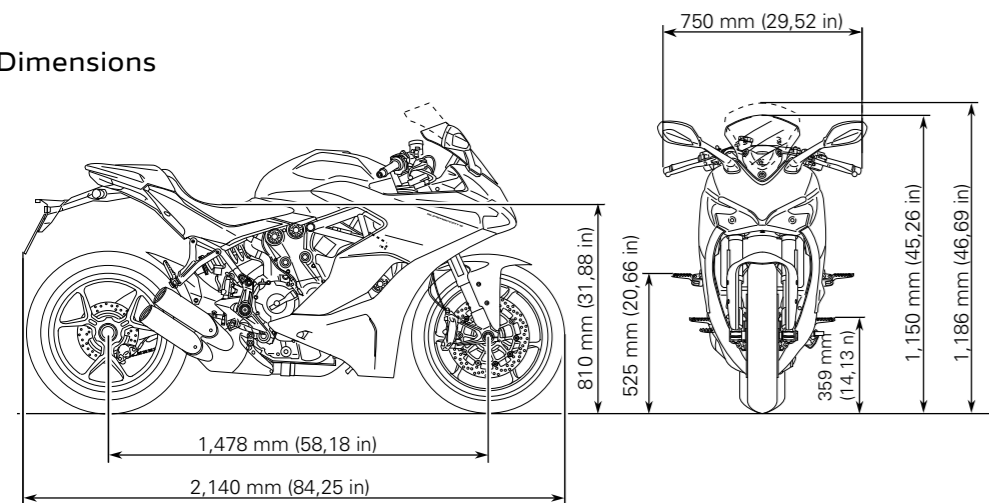




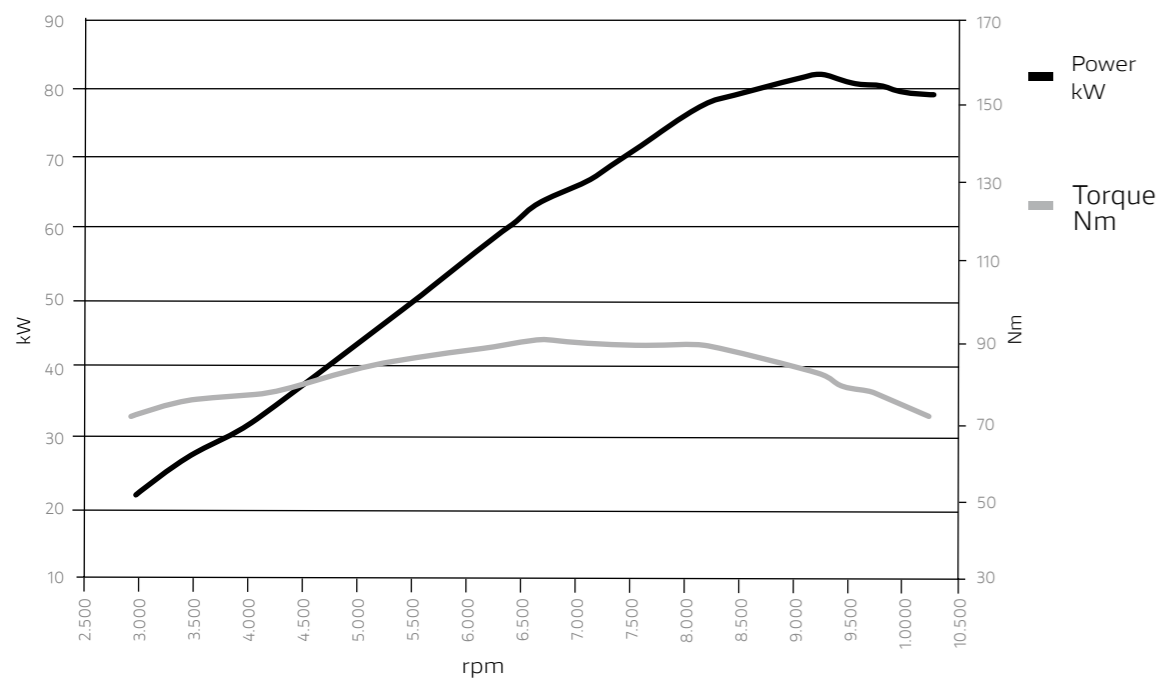
Technical data and gear

SUPERSPORT

Dimensions



Power and torque



Engine

Engine Testastretta 11°, L-Twin cylinder, 4 valve per cylinder, Desmodromic, liquid cooled

Displacement 937 cc

Bore X stroke 94 x 67,5 mm

Compression ratio 12,6± 0.5 :1

Power 81 kW (110 hp) @ 9,000 rpm

Torque 93 Nm (69 lb-ft)@ 6,500 rpm

Fuel injection Electronic fuel injection system, Ø 53 mm throttle bodies with full Ride-by-Wire

Exhaust Lightweight 2-1-2 system with catalytic converter and two lambda probes. Twin aluminium mufflers

Transmission

Gearbox 6 speed

Primary drive Straight cut gears; Ratio 1.84:1

Ratio 1=37/15 2=30/17 3=28/20
4=26/22 5=24/23 6=23/24

Final drive Chain; Front sprocket 15; Rear sprocket 43

Clutch Wet multiplate clutch mechanically operated, self-servo action on drive, slipper action on over-run

Chassis

Frame Tubular steel Trellis frame attached to the cylinders head

Front suspension Fully adjustable Ø 43 mm usd Marzocchi fork

Front wheel Y shaped, 3-spoke in light alloy 3.50" x 17"

Front tyre Pirelli Diablo Rosso III 120/70 ZR17

Rear Suspension Progressive linkage with adjustable Sachs monoshock. Aluminium single-sided swingarm

Rear Wheel Y shaped, 3-spoke in light alloy 5.50" x 17"

Rear tyre Pirelli Diablo Rosso III 180/55 ZR17

Wheel travel (front/rear) 130 mm (5.1 in)/ 144 mm (5.7 in)

Front brake 2 x 320 mm semi-floating discs, radially mounted Monobloc Brembo M4-32 callipers, 4-piston, radial pump with Bosch ABS

Rear brake 245 mm disc, 2-piston caliper, Bosch ABS

Instrumentation LCD display

Dimensions and weights

Dry weight 184 kg (405 lb)

Weight in running order 210 kg (463 lb)

Seat height 810 mm (31.9 in)

Wheelbase 1,478 mm (58.3 in)

Rake 24°

Front wheel trail 91 mm (3.6 in)

Fuel tank capacity 16 l - 4.2 gallon (US)

Number of seats 2

Standard equipment

Riding Modes, Power Modes, Ducati Safety Pack (Bosch ABS + Ducati Traction Control DTC), Ride by Wire (RdW), Full-LCD display, Daytime Running Light (DRL), Adjustable windscreen, USB socket, Ready for Ducati Quick Shift (DQS) up/down, Ducati Multimedia System (DMS) and anti-theft system
For DRL please check product availability with your Dealer

Warranty

Warranty 24 months unlimited mileage

Maintenance

Maintenance 15,000 km 9,000 mi/12 months

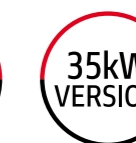
Valve clearance adjustment 30,000 km 18,000 mi

Emission & Consumptions*

Standard Euro 4

Emission CO2 136 g/km

Consumptions 5,9 l/100 km



Equal to 18,000 miles

Indication of mileage at the first Desmo Service, or rather the first service during which valve clearance is checked and adjusted if necessary.

* Only for countries where Euro 4 standard applies.

SUPERSPORT

Body colour: Titanium Grey
Chassis: Ducati Red



SUPERSPORT S

	SuperSport	SuperSport S
Front suspension	Marzocchi fully adj. Ø43 mm fork	Öhlins fully adj. Ø48 mm fork with TiN treatment
Rear suspension	Sachs adjustable mono-shock	Öhlins fully adj. mono-shock
DQS up/down	Accessory	Standard
Seat cowl	Accessory	Standard
Body colour	Single colour Ducati Red	Single colour Ducati Red Star White Silk



1 Öhlins fully adjustable fork, 320 mm discs and radial caliper Brembo monobloc.



2 Electronic gear sensor Ducati Quick Shift (DQS) up / down.



3 Fully adjustable Öhlins shock with tank integrated gas.

SUPERSPORT S

Body colour: Star White Silk
Chassis: Ducati Red



Body colour: Ducati Red
Chassis: Ducati Red



Accessories





Accessories pack

Touring

The SuperSport has also been designed with long-distance travel in mind; the Touring pack lets the rider and passenger remain relaxed and carefree as they ride. Semi-rigid side panniers are incorporated into the SuperSport's design, heated grips and a more protective windscreen ensure outstanding comfort and riding enjoyment.

Urban

Useful and practical: two keywords that sum up the Urban pack. Rider and passenger footpegs with rubber inserts ensure maximum grip even in the rain and with any footwear, while the Small tank bag ensures personal items, such as your smartphone and sunglasses are always conveniently within reach. The Urban pack includes an alarm system to ensure your bike is fully protected.

Touring pack







Urban pack



Small tank bag



Tanklock® flange kit



Ducati Performance dedicated anti-theft system



JPN Set of two aluminium footpegs

Touring pack



Heated plug-&-play handgrips



Side bags



RT SWS Smoked windscreen kit

F



1 Complete exhaust kit



This product is designed exclusively for race bikes ridden on a closed racetrack. Its use on public roads is forbidden by law.

For more information about the accessories range, technical specifications and instructions, visit a Ducati Dealer or the Accessories section of the ducati.com site.



2 Approved silencers



3 Carbon rear mudguard

M

Package components can also be purchased individually.



1 Carbon chain guard



2 Carbon swingarm guard



3 Carbon fiber front sprocket cover



1 Cover for front and rear brake fluid tanks



2 Billet aluminum caps to plug mirror mounting holes



3 Brake lever protection



4 Carbon fibre front mudguard



5 Billet aluminum brake fluid reservoir



6 Billet aluminum brake fluid reservoir



4 Brake lever



5 Clutch lever



6 Pair of LED turn indicators





1 Adhesive tank protector



M 2 Magnetic tank bag



3 Passenger seat bag

Other accessories for your SuperSport

Ducati Quick Shift

Ducati Multimedia System

Comfort seat

Low seat

Passenger grab handles

Handlebar counterweights



Öhlins adjustable steering damper

Passenger seat cover



Bike cover

For motorcycle without panniers and/or top case

Number plate holder fastening cover pad



Underseat aluminium number plate holder



Protective mesh for water radiator



Carbon belt guards



Key to symbols

This product is intended for racing vehicles used only in closed-course competition. Operation on public roads is prohibited by law.

For racing use only. The product marked with this symbol can only be used on competition vehicles. Use outside a competition track of motorcycles equipped with this product is prohibited by law. Verify any further restrictions with the relevant race course. Motorcycles equipped with this accessory are prohibited from operating on public roads.

This accessory is not approved for road circulation.

Accessory type-approved for road use.

Type-approved silencer according to Regulation (EU) No. 168/2013 of 15/01/2013

Accessory type-approved for road use in Japan

This accessory cannot be used/sold in Japan

Anodized

Matt

Tinted

Race titanium

Star white silk

Gold

Red

Black

Silver



Apparel



Redline
Full-face helmet

98104021_ECE
98104022_USA
98104023_JAP

Company C2
Leather jacket

9810321_man standard black
9810322_man perforated black
9810323_man standard red
9810324_woman perforated black

City C2
Fabric-leather gloves

98102826_





Flow 2
Fabric Jacket
98102795_

Summer 2
Fabric-leather gloves
98102827_



Redline
Fabric Jacket
98103167_man
98103168_woman

Ducatiana
T-shirt
98769054_woman red
98769055_woman black
98769050_man red
98769051_man white
98769052_man black
98769053_man melange grey



D-Attitude
Sweatshirt

98769512_ man
98769515_ woman

D-Attitude
Short-sleeved polo shirt

98769513_ man
98769516_ woman

Company 2
Technical jeans

9810311_ woman
9810310_ man

Vintage
Leather jacket

98769514_ woman
98769510_ man

Ducati
Leather jacket

98769511_



91750131ZE

Sport, made light





ducati.com

Riding a motorcycle is the most exciting way to enjoy the road, and offering the utmost safety to the motorcyclist is Ducati's commitment. Ducati bikes are increasingly easy to handle, reliable and better equipped to guarantee maximum safety and enhance riding pleasure. Technical clothing is made with ever more advanced materials for adequate protection and increased visibility. The safety of motorcyclists is Ducati's commitment. For more information visit the safety section of the Ducati site (www.ducati.com).

WARNING: The photos and technical information in this catalogue may refer to prototypes subject to modifications during production and are purely for illustration and reference purposes, and are therefore not binding on Ducati Motor Holding S.p.A. Sole Shareholder Company - Company subject to the direction and coordination of AUDI AG ("Ducati"). Ducati cannot be held responsible for any print and/or translation errors. This catalogue is transnational and therefore some products may not be available and/or their features may vary in accordance with local laws. Not all colours and versions are available in each country. Ducati reserves the right to make changes and improvements to any product without obligation of prior notice or to make such changes to products already sold. Further characteristics of the products are contained in the owner's manuals. The products represented are not definitive versions and are therefore subject to significant changes at Ducati's discretion without prior notice. The photographs published in this catalogue show only professional riders under controlled street conditions. Do not attempt to imitate such riding behaviour as it could be dangerous for you or other people on the road. This catalogue, including but not limited to the trademarks, logos, texts, images, graphics and table of contents herein, constitute Ducati intellectual property, or in any event Ducati has the right to reproduce it; any reproduction, modification or other whole or partial use of the catalogue or its contents, including publication on the Internet without the prior written consent of Ducati, is prohibited.

Actual fuel consumption may vary based on many factors, including but not limited to riding style, maintenance performed, weather conditions, surface characteristics, tyre pressure, load, weight of the rider and the passenger, accessories.

Ducati indicates the dry weight of the motorcycle excluding battery, lubricants and coolants for liquid-cooled models. The weights in running order are considered with all operating fluids and the fuel tank filled to 90% of its useful capacity. For more information visit www.ducati.com. Printed in December 2018.